

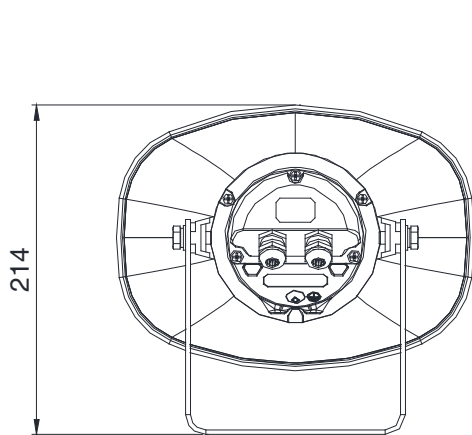
■ DESCRIPTION

The SC-PE615 is a compact, highly intelligible speaker with a built-in 10W power amplifier powered by PoE+ and DC input, that provides public address announcement and remote paging via network video surveillance applications. Its rugged enclosure is IP66 rated for out door environments.

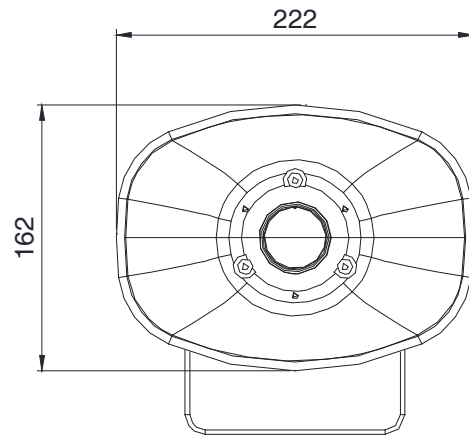
■ SPECIFICATIONS

Power Source	DC12V/ DC24V (9V~29V) PoE+ (IEEE802.3at) PoE (IEEE802.3af)
Power Consumption	35 W or less (Rated output) 4 W or less (Standby)
Maximum Sound Pressure level	115dB±3dB
Sensitivity	105dB±3dB (1W, 1m)
Standby Power	≤ 4W
Rated output to Speaker	7.5 W (at DC12V powered) 10W (at PoE+ powered) 5W (at PoE powered)
Rated output for Speaker output	7.5 W (at DV12V powered) 10W (at PoE+ powered) 5W (at PoE powered)
Signal to Noise Ratio	≥ 85dB (Speaker output)
Frequency Response	280Hz ~ 12.5KHz (Speaker output)
Distortion	0.5 % or less
Audio Input	-6dB, 10kΩ electronically-balanced, removable terminal block (3 pins)
Speaker output	Low impedance (8Ω)
PoE / PoE+ Interface	RJ45
Indicators	Power indicator LED (Rear side / Bottom side) Audio input indicator LED
Dust/Water protection	IP66
Operating temperature	-20°C ~ +50°C
Operating humidity	10%~90%RH (no condensing)
Finish	Horn flare: Aluminum, Off-white, powder coating Reflector horn and rear cover: Aluminum, off-white, powder coating Cable Gland: Nickel plated copper Brackets, screws, and bolts: Stainless steel
Dimensions	222(W)×162(H)×281(D)mm
Weight	1.35 kg (2.98 lb)
Accessories	Removable terminal plug (2 pins) ...1pcs Removable terminal plug (4 pins) ...1pcs Removable terminal plug (3 pins) ...1pcs

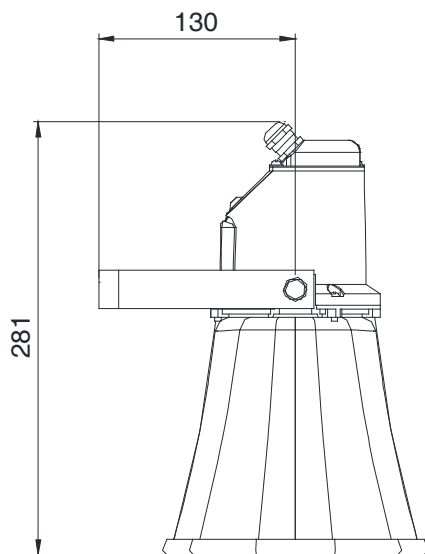
■ APPEARANCE



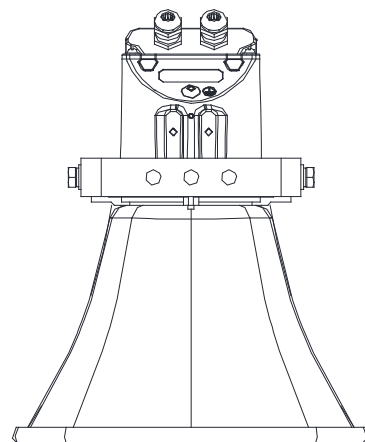
Rear View



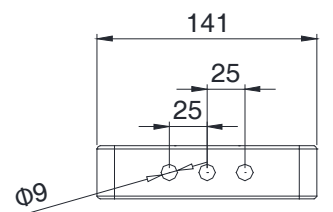
Front View



Side View A



Side View B



Mounting hole position