



TS-820 / 920 Series

Infrared Wireless Conference System

The background of the advertisement is a high-contrast, black and white photograph of a modern conference room. A long, dark conference table is surrounded by white chairs. Each chair has a gooseneck microphone attached to it. The room has a dark ceiling with recessed lighting and a large window on the left side with vertical blinds. A potted plant is visible on the left side of the room.

Flexible
Conference System
with **Clear Sound**
Amplification

TS-920 / TS-820 Series

KEY FEATURES

- Selectable number of open microphones
- 3 different microphone operating modes
- Auto-off function automatically turns of mic after 30 seconds of silence
- Built-in audio recording: conference can be recorded in mp3 format on USB device or internal memory (with TS-820RC or TS-920RC)
- External control: available remote control protocol enables conference operation on custom-made software as well as integration with other devices such as cameras
- Minimal contour: The solid design creates a formal and impressive atmosphere for conferences while the pyramid shape is unobtrusive and elegant
- High conference quality: excellent, natural sounding voice transmission
- Advanced feedback suppressor minimizes acoustic feedback
- Auto Gain Control function adjusts the gain based on how loud or soft a person's voice is
- TS-920: 2 language conference selectable; 3-choice voting function

SYSTEM COMPONENTS TS-920

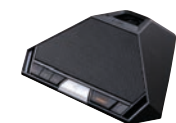
TS-920RC



Central Unit with recording function

- Main unit of the system
- Up to 192 conference unit controllable
- 2 x Mic In (Main/Sub), 3 x AUX In (Main/Sub/Main and Sub) Line Out, Rec Out, Headphone monitor out, EQ in/out
- Function setting – Number of open microphones, Auto mic-off function, Speech priority selector, Feedback suppressor
- Recording capability to USB and internal memory
- Voting result indicator
- Rack-mountable with MB-TS920 optional bracket

TS-921



Chairman Unit

- Chairman unit for basic discussion
- Priority button
- Equipped with voting function
- 0.2W monitor speaker
- Audio monitoring switch (Main or Sub)
- 2 headphone jacks with individual volume control
- Approx. 10 hours continuous operation with the use of optional rechargeable lithium-ion battery

TS-922



Delegate Unit

- Delegate unit for basic discussion
- Equipped with voting function
- 0.2W monitor speaker
- Audio monitoring switch (Main or Sub)
- 2 headphone jacks with individual volume control
- Approx. 10 hours continuous operation with the use of optional rechargeable lithium-ion battery

SYSTEM COMPONENTS TS-820

TS-820RC



Central Unit with recording function

- Main unit of the system
- Up to 64 conference unit controllable
- Mic In, AUX In, Line Out, Rec Out, Headphone monitor out, EQ in/out
- Recording capability to USB and internal memory
- Function setting – Number of open microphones, Auto mic-off function, Speech priority selector, Feedback suppressor
- Rack-mountable with MB-TS920 optional bracket

TS-820



Central Unit

- Main unit of the system
- Up to 64 conference units controllable
- Mic In, AUX In, Line Out, Rec Out, Headphone monitor out, EQ in/out
- Function setting – Number of open microphones, Auto mic-off function, Speech priority selector, Feedback suppressor
- Rack-mountable with MB-TS920 optional bracket

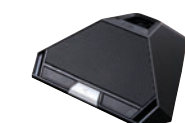
TS-821



Chairman Unit

- Chairman unit for basic discussion
- Priority button
- 0.2W monitor speaker
- 2 headphone jacks with individual volume control
- Approx. 10 hours continuous operation with the use of optional rechargeable lithium-ion battery

TS-822



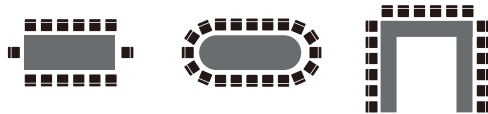
Delegate Unit

- Delegate unit for basic discussion
- 0.2W monitor speaker
- 2 headphone jacks with individual volume control
- Approx. 10 hours continuous operation with the use of optional rechargeable lithium-ion battery

Infrared Wireless Conference System

WIRELESS UNITS FOR SYSTEM FLEXIBILITY

Wireless feature makes the system ideal for any conference apt to change the number of participants or layout.



SELECTABLE MICROPHONES

Long or short microphones can be used depending on requirements.



COMMON COMPONENTS

TS-924



Gooseneck Microphone (Long)

- Gooseneck microphone with two flexible sections
- Unidirectional electret condenser microphone
- Red lights ring to display talk released
- XLR-4-32 connector
- Sensitivity:-37 dB (1 kHz, 0 dB = 1 V / PA)
- Frequency response: 100 Hz - 13 kHz
- Length: 620 mm (2.03 ft)

TS-923



Gooseneck Microphone

- Gooseneck microphone with two flexible sections
- Unidirectional electret condenser microphone
- Red lights ring to display talk released
- XLR-4-32 connector
- Sensitivity:-37 dB (1 kHz, 0 dB = 1 V / PA)
- Frequency response: 100 Hz - 13 kHz
- Length: 470 mm (1.54 ft)

TS-905



Infrared Transmitter/Receiver

- Communication between the Central Unit and Chairman/Delegate Unit performed by means of Infrared signals
- Variety of mounting methods: ceiling, wall and microphone stand
- Designed for low ceiling applications, e.g. ceiling height 2.5 - 4.5 m (8.2 - 14.76ft)

TS-907



Infrared Transmitter/Receiver

- Communication between the Central Unit and Chairman/Delegate Unit performed by means of infrared signals
- Variety of mounting methods: ceiling, wall and microphone stand
- Designed for high ceiling applications, e.g. ceiling height 5.0 - 7.0m (16.4 - 22.97ft)

YW-1022



Distributor

- Signal distributor used to expand the number of connectable Infrared Transmitter/Receiver units
- For 2-branch distribution

YW-1024



Distributor

- Signal distributor used to expand the number of connectable Infrared Transmitter/Receiver units
- For 4-branch distribution

BP-900A



Rechargeable Lithium-ion Battery

- Designed for use with the Chairman/Delegate Units
- Nominal Voltage: 7.2 VDC
- Weight: 95 g

BC-900



Battery Charger

- Dedicated battery charger for the BP-900A
- Permits up to 8 batteries to be simultaneously charged within up to 5 hours
- Finish: Steel, black, paint
- Weight: 1.2 kg

MB-TS920



Rack Mounting Bracket

- Designed for exclusive use with TS-820, TS-820RC and TS-920RC.

SYSTEM CONFIGURATIONS

