



OPERATING INSTRUCTIONS

INFRARED CONFERENCE SYSTEM

TS-820RC/TS-920RC TIME SETTING TOOL

TABLE OF CONTENTS

| | | | |
|---|---|--|---|
| 1. SOFTWARE SUMMARY | 2 | 4. STARTING THE SOFTWARE | 6 |
| 2. INSTALLATION METHOD | 3 | 5. PERFORMING TIME SETTINGS | 7 |
| 3. CONNECTING THE TS-820RC/920RC TO A PC | 6 | 6. TROUBLESHOOTING | 9 |

1. SOFTWARE SUMMARY

This TS-820RC/TS-920RC Time Setting Tool is designed to connect the recording function-equipped TS-820RC/920RC Central unit of the Infrared conference system to a PC and adjust the Central unit's internal clock.

Note

The TS-820RC/920RC is equipped with a clock function that allows time information to be affixed to recorded files.

The following specifications must be met to install the software onto the computer.

| | |
|-----------------------|---------------------------|
| Hardware Requirements | |
| Display | 1366 x 768 pixels or more |
| USB | USB 2.0 or greater |
| Software requirements | |
| OS | Windows 10 (32/64 bit) |
| Essential component | .NET Framework 4.5 |

Note

Microsoft and Windows are the registered trademarks of Microsoft Corporation in the United States and other countries.

2. INSTALLATION METHOD

2.1. Installation of TS-820RC/TS-920RC Time Setting Tool Software

The newest TS-820RC/TS-920RC Time Setting Tool software can be downloaded from the TOA product data download site (<https://www.toa-products.com/international/>).

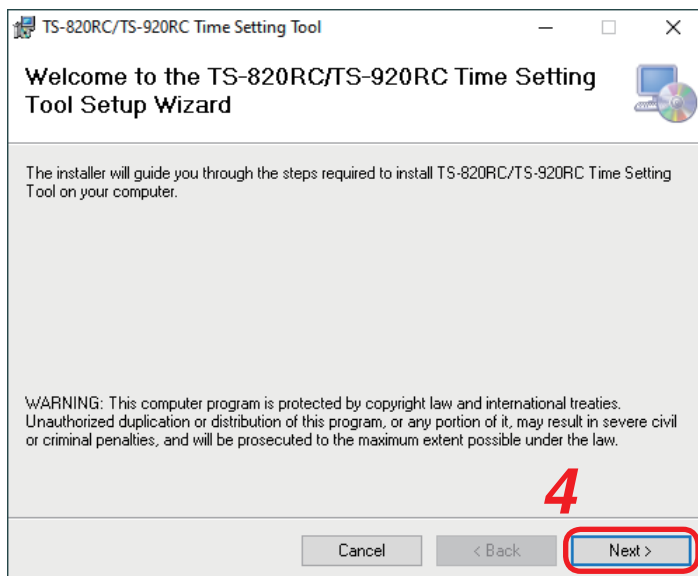
Click on the link above to access the download site, then enter the model number (TS-820RC or TS-920RC) in the Model No. field to search for the specified software and download accordingly.

Follow the procedure below to install the software:

Step 1. Download the [TS-820RC/TS-920RC Time Setting Tool] from the TOA website (<https://www.toa-products.com/international/>).

Step 2. Extract the downloaded software package.

Step 3. Double-click on the [setup.exe] file found in the extracted folder to start the installer.



Step 4. Click the [Next] button.
Install the software as instructed by the screen guide.

Note

To uninstall the software, use the [Program and Features] on the control panel.

2.2. Installation of USB Driver

The USB driver is required to be installed in order to connect the TS-820RC/920RC with the PC. There are 2 methods to install the driver.

Tip

The USB driver can occasionally be re-installed when a different USB port is used to connect to the receiver from the one used for the initial driver installation. When this occurs, please wait till the Completion dialog is displayed.

2.2.1. Automatic installation using Windows Update

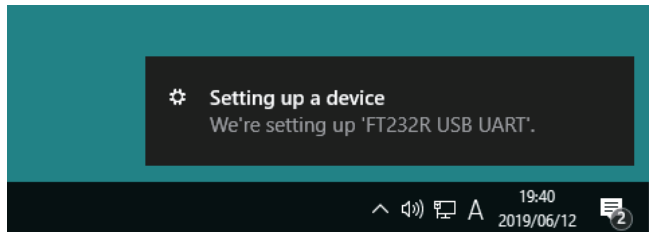
Step 1. Make sure the PC is connected to the Internet.

Step 2. Using the USB cable, connect the TS-820RC/920RC to the PC. (See p. 6).

The PC will automatically connect to Windows Update and install the USB driver required to connect the TS-820RC/920RC to the PC.

Note

The following screen may appear during driver installation.



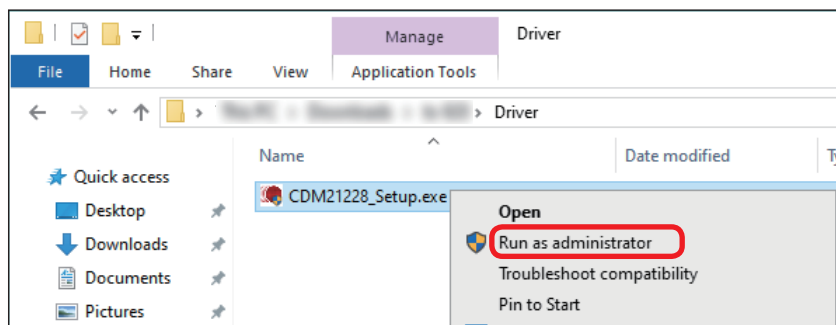
2.2.2. Manual installation from downloaded file

If the driver cannot be installed using the above "Automatic installation using Windows Update," refer to the following procedure for manual installation:

The downloaded TS-820RC/TS-920RC Time Setting Tool (See p. 3) folder contains the USB driver data. Select the data to install the driver.

Step 1. Open the driver folder found in the downloaded file.

Step 2. Right click on an execution file called "xxxx_Setup.exe" and select "Run as administrator."



Step 3. Install the driver by following the instructions on the screen.

2.3. Check to Make Sure the USB Driver is Installed

The following procedure can be taken to make sure the USB driver is installed correctly.

Note

Please confirm that the TS-820RC/920RC is properly connected to the PC to check to see if the USB driver is installed correctly.

(See [the next page "CONNECTING THE TS-820RC/920RC TO A PC."](#))

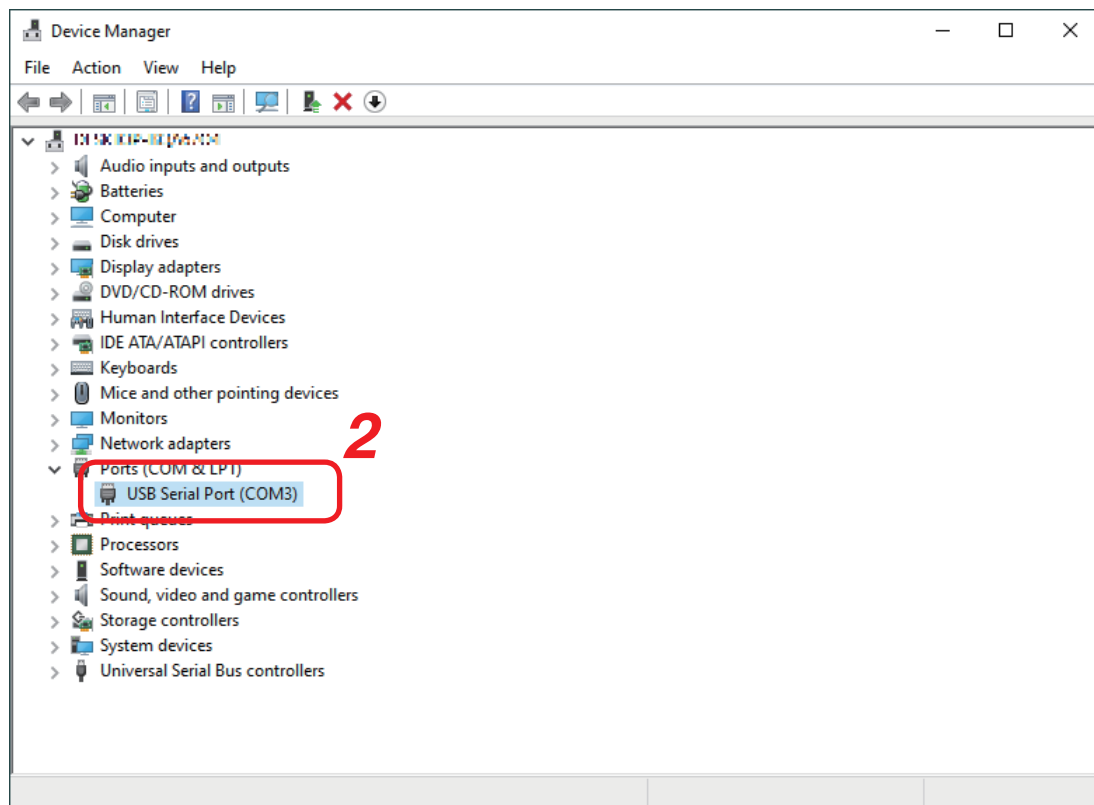
Step 1. Start Device Manager.

Please read the instruction manual for the PC regarding how to start the Device Manager.

Step 2. Confirm that "USB Serial Port (COMx*)" is displayed in the list of displayed Ports (COM & LPT).

If USB Serial Port (COMx*) is displayed, the USB driver has been securely installed.

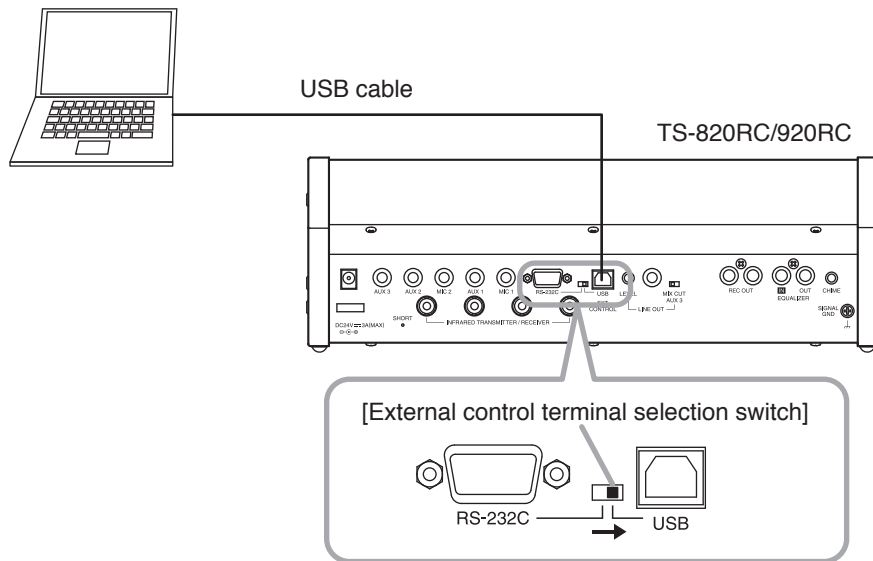
* A port number will be displayed in x.



3. CONNECTING THE TS-820RC/920RC TO A PC

Using a compatible USB cable, connect the TS-820RC/920RC's USB external control port to one of the PC's USB ports.

- Use a typical (printer-type) USB 2.0 A-to-B cable.
- Set the External control terminal selection switch to the USB position.

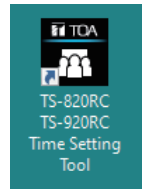


4. STARTING THE SOFTWARE

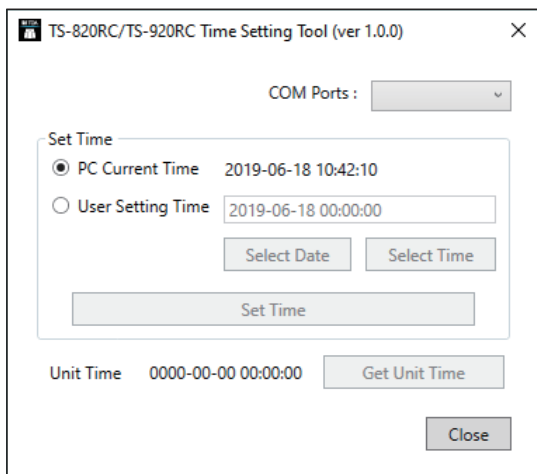
Step: Double-click on the shortcut icon that appears on the desktop after installation is complete. [Shortcut icon]
The TS-820RC/TS-920RC Time Setting Tool will start up and the setting screen displayed.

Tip

The Tool can also be started from the Windows Start menu. The shortcut icon is created below the TOA folder in the start menu.



[Setting screen]



5. PERFORMING TIME SETTINGS

Perform time settings after selecting the COM port to which the TS-820RC/920RC is connected.

5.1. COM Port Selection

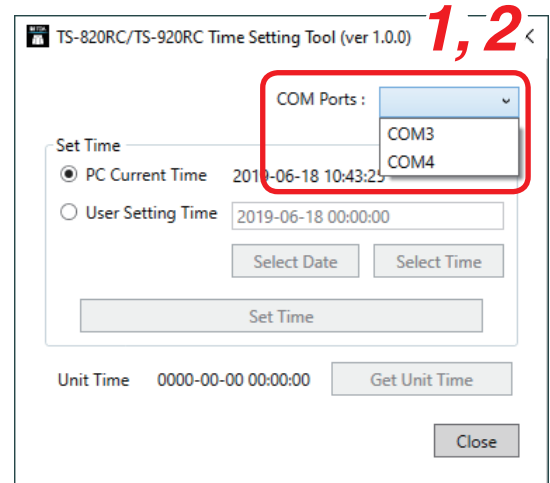
After the TS-820RC/TS-920RC Time Setting Tool is started, select the COM port.

Step 1. Click on the [COM Ports] pull-down menu.
The usable port numbers are displayed.

Step 2. Select the port number corresponding to the one to which the TS-820RC/920RC is connected.

Tips

- Which port number the Central unit is connected to can be confirmed with the device manager. (See p. 5 "Check to Make Sure the USB Driver is Installed.")
- Once selected, the same number will always be displayed when the Time Setting Tool is restarted.



5.2. Time Settings

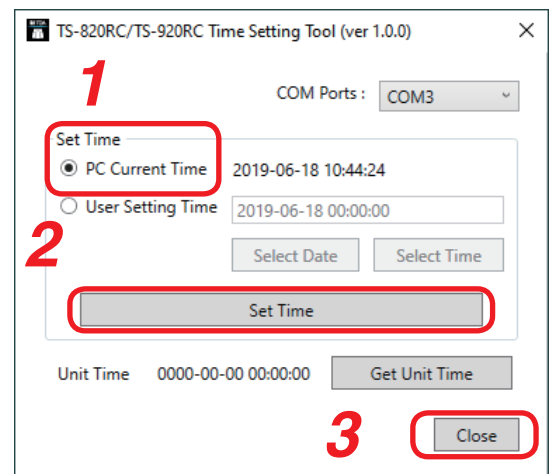
There are 2 methods for setting the time: one for synchronizing the Central unit's clock with the PC's current date and time, and the other for setting an arbitrary time.

5.2.1. Synchronizing with a PC's Current Date and Time

Step 1. Select [PC Current Time].

Step 2. Click the [Set Time] button.
The Central unit's internal clock is synchronized with the PC's current time.

Step 3. Click the [Close] button to close the setting screen.

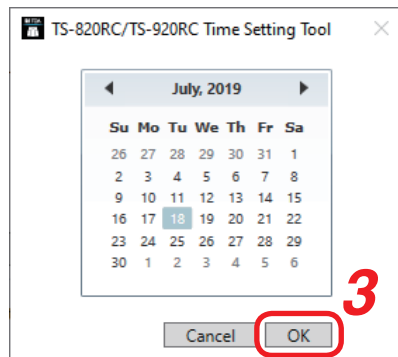


5.2.2. Setting to an Arbitrary Time

Step 1. Select [User Setting Time].

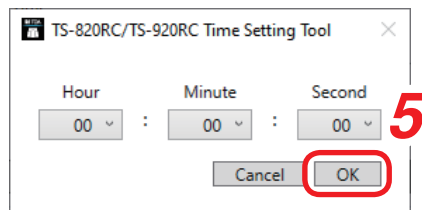
Step 2. Click the [Select Date] button.
A calendar is displayed.

[Calendar screen]



Step 3. Select a date on the calendar and click the OK button.
The calendar screen is closed.

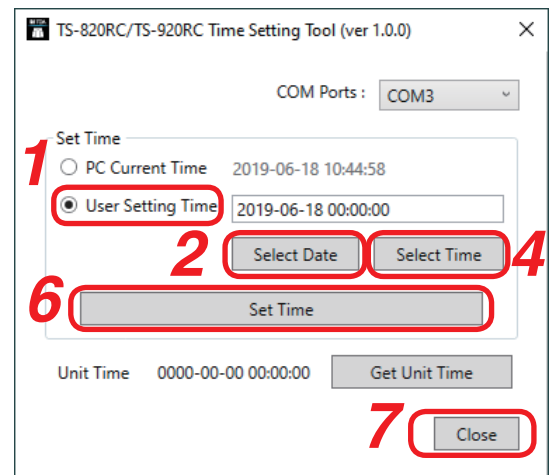
Step 4. Click the [Select Time] button.
The time selection screen is displayed.



Step 5. Set the "Hour," "Minute" and "Second" numbers and click the OK button.
The time selection screen is closed.

Step 6. Click the [Set Time] button.
The Central unit's internal clock is set to the selected time.

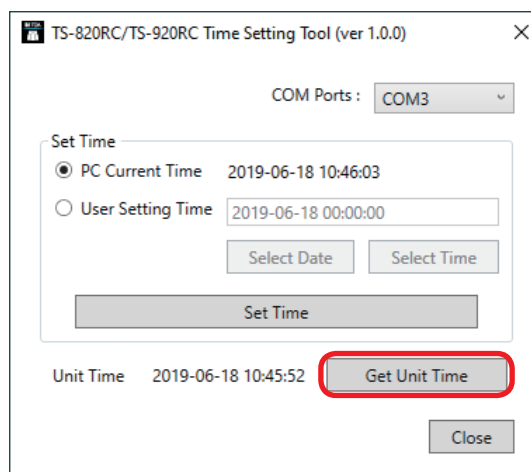
Step 7. Click the [Close] button.
The setting screen is closed.



5.3. Confirming the TS-820RC/920RC's Set Time

The time set to the TS-820RC/920RC can be easily confirmed.

Step: Click the [Get Unit Time] button.
The TS-820RC/920RC's current time setting is displayed on the left side of the button.



6. TROUBLESHOOTING

| Symptom | Possible Cause | Remedy |
|--|---|--|
| No COM ports are displayed on COM Ports pull-down menu. | TS-820RC/920RC's power not turned ON. | Turn ON TS-820RC/920RC's power. |
| | Incorrect USB cable connection. | Ensure correct USB cable connection. (See p. 6 "CONNECTING THE TS-820RC/920RC TO A PC.") |
| Clicking on the [Set Time] button results in display of "Process failed" message. | Wrong COM port selected. | Select correct COM port number. (See p. 7 "COM Port Selection.") |
| Clicking on the [Set Time] button results in display of "Port is invalid" message. | TS-820RC/920RC's power switched OFF after COM port selection. | Turn ON TS-820RC/920RC's power and click on button again. |
| | USB cable disconnected after COM port selection. | Ensure USB cable is correctly connected and click on button again. |
| Even if time is changed, clock reverts to previous state. | Loss of charge in TS-820RC/920RC's backup battery. | Please contact the shop from which the TS-820RC/920RC was purchased. |

Traceability Information for Europe

Manufacturer:
TOA Corporation
7-2-1, Minatojima-Nakamachi, Chuo-ku, Kobe, Hyogo,
Japan

Authorized representative:
TOA Electronics Europe GmbH
Suederstrasse 282, 20537 Hamburg,
Germany

URL: <https://www.toa.jp/>